

PART OF N.E. 1/4 OF SECTION 29, T.7N., R.1W., S.L.B. & M.

TAXING UNIT: 10

IN NORTH OGDEN CITY
SCALE 1" = 100'

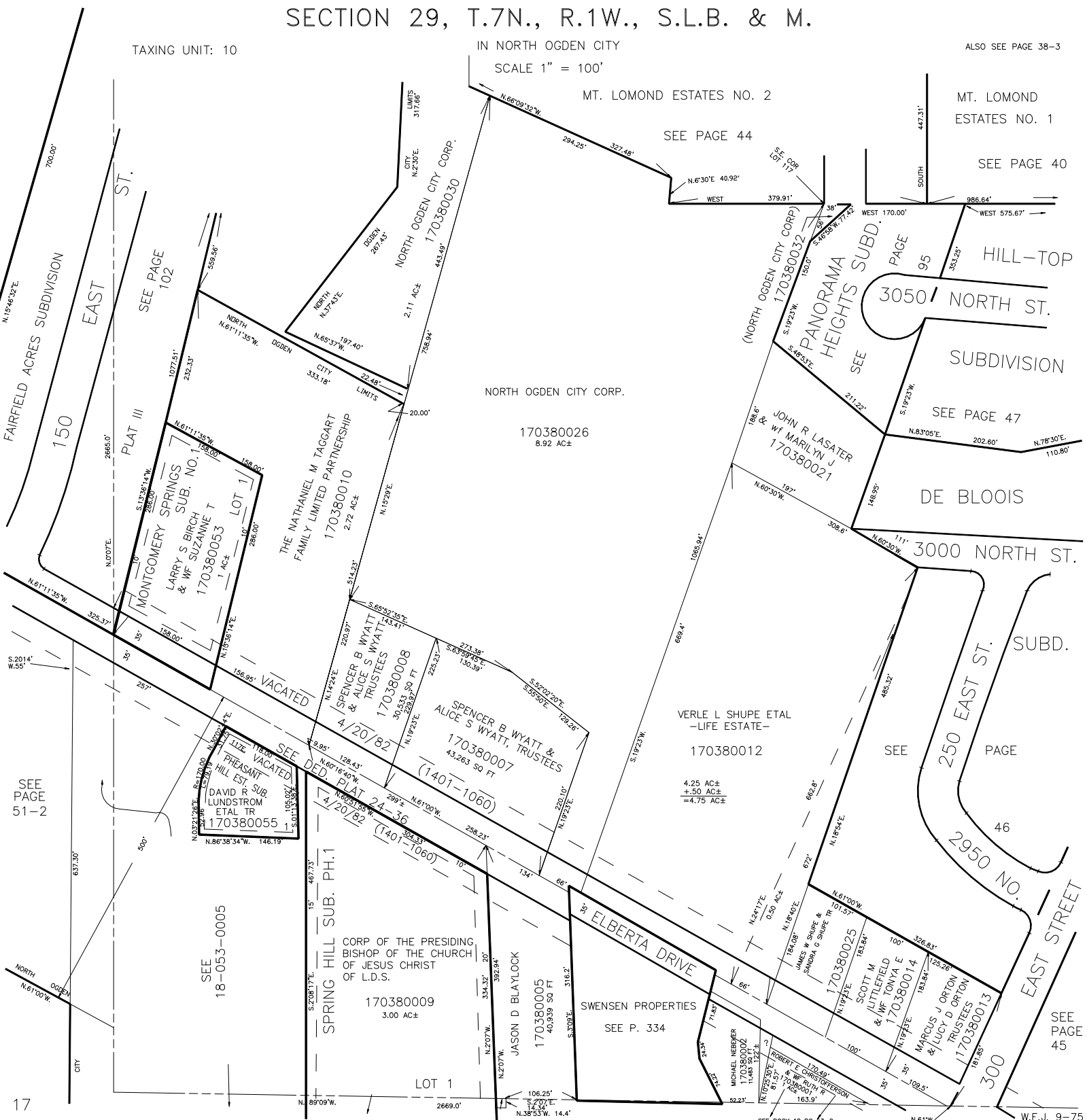
ALSO SEE PAGE 38-3

MT. LOMOND ESTATES NO. 2

MT. LOMOND ESTATES NO. 1

SEE PAGE 44

SEE PAGE 40



SEE PAGE 51-2

17

SEE PAGE 45

SEE BOOK 18 PG 53-2

W.F.J. 9-75